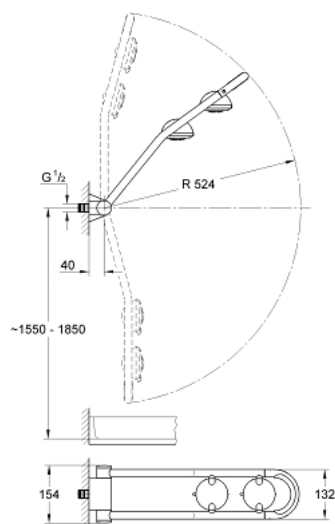


27 005 000 FREEHANDER SHOWER SYSTEM FOR CONCEALED INSTALLATION

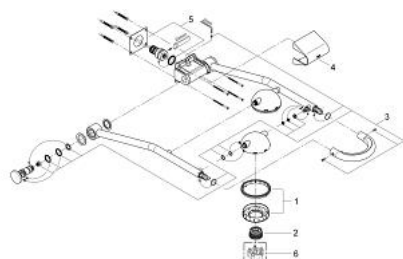


PRODUCT DESCRIPTION

- Colour: chrome
- with two rotating shower heads
- swivelling for using as head- and side shower
- 1 shower head with wide, Pulsator and Eco spray
- 1 shower head with wide and pulsator spray
- lockable
- both heads with speed clean anti lime-scale system
- self stopping joint
- GROHE Long-Life finish
- not suitable for instantaneous heater
- minimum pressure 1,0 bar



27 005 000 **FREEHANDER SHOWER SYSTEM** **FOR CONCEALED INSTALLATION**



SPARE PARTS, Jun 2007 – spareParts.validDate.now

1: Spray faceplate (Order-nr. 45877P00)

2: Replacement pulsator element (Order-nr. 45656XX0)

3: Repl. kit f. seal (Order-nr. 45878000)

4: Cap (Order-nr. 45879000)

5: Repl. kit f. seal (Order-nr. 45901000)

6: Disassembling key

(for Relaxa Plus, Relaxa Cosmopolitan face plate) (Order-nr. 45654000)*

* Optional accessories