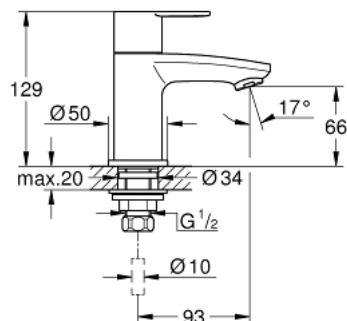


23 039 002 **EUROSTYLE COSMOPOLITAN PILLAR TAP**  
**XS-SIZE**



**PRODUCT DESCRIPTION**

- Colour: chrome
- single hole installation
- metal lever
- ceramic headpart
- GROHE Long-Life finish
- mousseur
- minimum pressure 1,0 bar
- noise classification 1 in accordance with DIN4109
- union nut 1/2" x 10,5 mm



## 23 039 002 EUROSTYLE COSMOPOLITAN PILLAR TAP XS-SIZE



### SPARE PARTS, Mar 2010 – spareParts.validDate.now

1: Handle (Order-nr. 48067000)

1.1: Replacement handle connection kit (Order-nr. 45186000)

1.1.1: O-ring  $\varnothing 18.2 \times \varnothing 1.7$  (Order-nr. 0392400M)

2: Ceramic headpart, 1/2" (Order-nr. 45882000)

2.1: O-ring  $\varnothing 18.2 \times \varnothing 1.7$  (Order-nr. 0392400M)

3: Economy Mousseur (Order-nr. 13951000)

4: Shank fastening assembly (Order-nr. 45000000)

5: Coupling nut 1/2" x 10.5 mm (Order-nr. 1290100M)

5.1: Fibre seal dia. 12x2 mm (Order-nr. 0138900M)

6: Coupling nut 1/2" x 14.5 mm (Order-nr. 1290200M)\*

\* Optional accessories